

□ **P4C-386CH**



Product Spec Sheet

4" Two Handle Laundry Tray Faucet



FEATURES & BENEFITS

- All Brass Construction
- Extra Heavy
- Red & Blue Buttons
- Brass Supply Nuts

P4C-386CH
6" Tube Spout
Chrome Finish

APPROVALS:

Meets or Exceeds The Following:

- * ANSI/ASME A112.18.1
- * ANSI/NSF 61 – Sec. 9
- * IAPMO/UPC

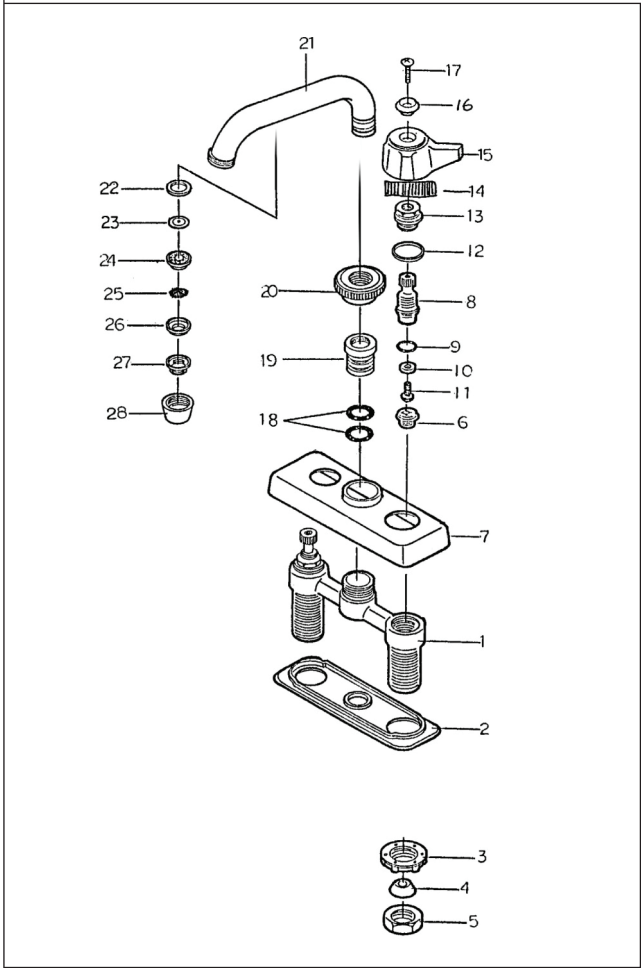


TEL: 855-806-0688 FAX: 845-350-4043

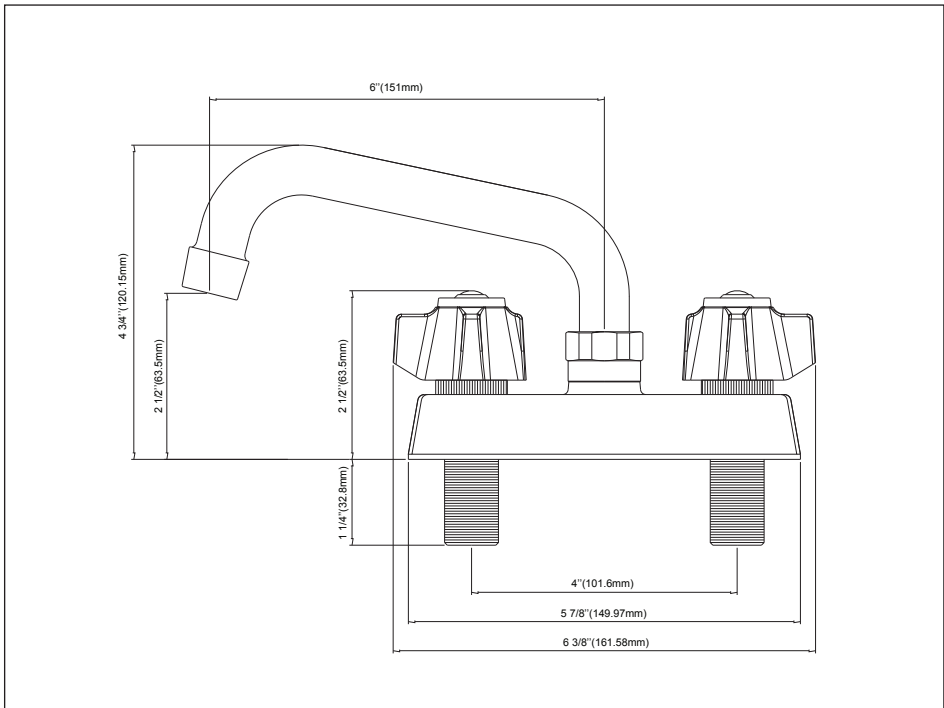
Visit Our Web Site : www.plumb4orce.com

4" Two Handle Laundry Tray Faucet

| No. | Name | Material |
|-----|---------------|----------|
| 1 | Body | Brass |
| 2 | Bottom Plate | Plastic |
| 3 | Lock Nut | Nylon |
| 4 | Rubber washer | NBR |
| 5 | Brass Nut | Brass |
| 6 | Seat | Brass |
| 7 | Escutcheon | Brass |
| 8 | Stem | Brass |
| 9 | O-Ring | NBR |
| 10 | Seat Washer | NBR |
| 11 | Screw | Brass |
| 12 | Washer | Celcon |
| 13 | Bonnet | Brass |
| 14 | Packing Nut | ABS |
| 15 | Handle | Zinc |
| 16 | Index Cap | ABS |
| 17 | Screw | Brass |
| 18 | O-Ring | NBR |
| 19 | Extension Hub | Brass |
| 20 | Spout Nut | Brass |
| 21 | Spout | Brass |
| 22 | Packing | NBR |
| 23 | Washer | Celcon |
| 24 | Louwer | Celcon |
| 25 | Flange | Celcon |
| 26 | Filter Lath | S/S |
| 27 | Inner Race | Plastic |
| 28 | Aerator Cap | Brass |



Product Spec Sheet



APPROVALS:
Meets or Exceeds The Following:

- * ANSI/ASME A112.18.1
- * ANSI/NSF 61 – Sec. 9
- * IAPMO/UPC

TEL: 855-806-0688 FAX: 845-350-4043

Visit Our Web Site : www.plumb4orce.com