

P4B-900CJP

P4B-900BNJP

P4B-900ORBJP



Two Handle Roman Tub Faucet



REQUIRES P4RR-999 ROUGH-IN VALVE

Product Spec Sheet

FEATURES & BENEFITS

Metal Lever Handles
Chrome Finish

APPROVALS:

Meets or Exceeds The Following:

- * ANSI/ASME A112.18.1
- * IAPMO/UPC

P4B-900CJP
Trim Kit For Roman Tub
Chrome Finish

P4B-900BNJP
Trim Kit For Roman Tub
Brushed Nickel Finish

P4B-900ORBJP
Trim Kit For Roman Tub
Oil Rubbed Bronze Finish

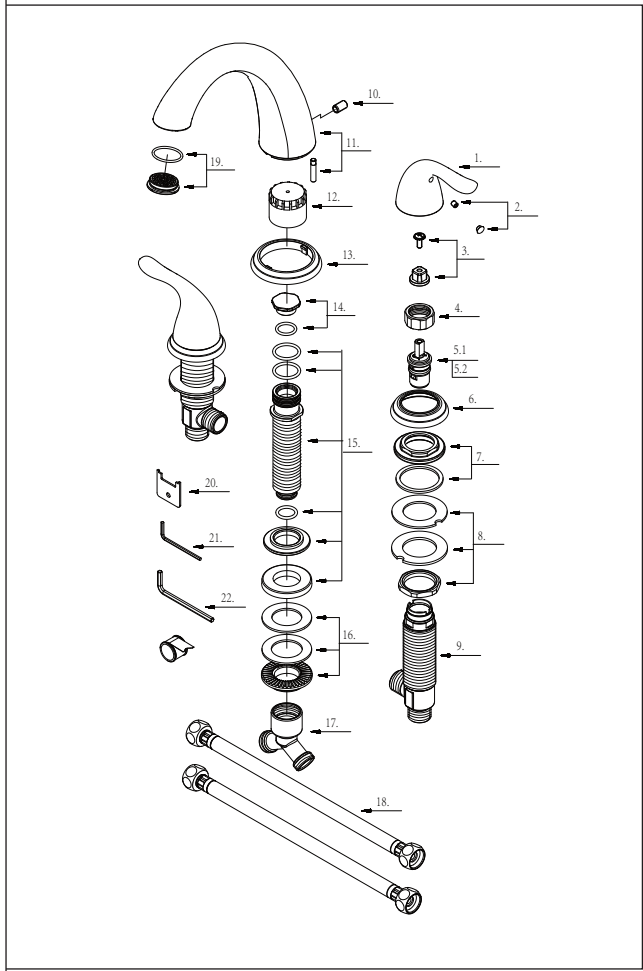
TEL: 855-806-0688 FAX: 845-350-4043

Visit Our Web Site : www.plumb4orce.com

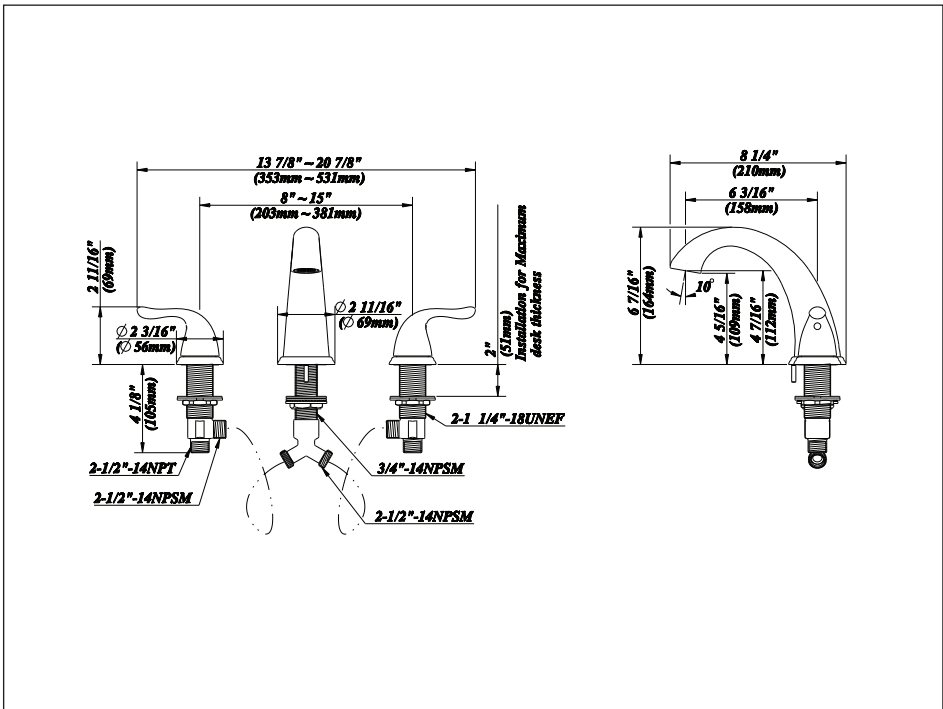


Two Handle Roman Tub Faucet

No.	Name	Material
1	Metal Handle	Zinc Alloy
2.1	Index Button-Cold	Plastic
2.2	Index Button-Hot	Plastic
3	Handle Adaptor	Plastic
4	Retainer Nut	Brass
5.1	Ceramic Disc Cartridge-Cold	Ceramic & Brass
5.2	Ceramic Disc Cartridge-Hot	Ceramic & Brass
6	Handle Trim Ring	Zinc Alloy
7	Handle Base	Brass
8	Mounting Hardware	Brass
9	Handle Valve Body	Brass
10	Screw (5/16" -18 UNC * 1/2" L)	Stainless Steel
11	Spout Set	Brass
12	Spout Rough In Cap	Plastic
13	Spout Trim Ring	Zinc Alloy
14	Spout Plug	Brass
15	Spout Body	Brass
16	Mounting Hardware	Brass
17	"Y" Adaptor	Brass
18	Supply Hose	Stainless Steel
19	Flow Straightener	Plastic
20	Flow Straightener Wrench	Stainless Steel
21	Hex Wrench (H2.5 * 19 mm L * 53 mm L)	Stainless Steel
22	Hex Wrench (H4 * 20 mm L * 70 mm L)	Stainless Steel



Product Spec Sheet



APPROVALS:

Meets or Exceeds The Following:

- * ANSI/ASME A112.18.1
- * IAPMO/UPC

TEL: 855-806-0688 FAX: 845-350-4043

Visit Our Web Site : www.plumb4orce.com