

□ **P4C-200C**

□ **P4C-240C**



8" Two Handle Kitchen Faucet

Product Spec Sheet



FEATURES & BENEFITS

- This Product Contains Less Than 0.25% Weighted Average Lead Content On Wetted Surfaces
- Metal Wing Handles
- Washerless Cartridges
- With Black Side Spray
- Max Flow Rate 1.5 GPM (5.7 L/MIN) At 60 PSI (ASME A112.18.1M/A112.18.1)

P4C-240C
Chrome Finish

P4C-200C
Less Side Spray
Chrome Finish

APPROVALS:

Meets or Exceeds The Following:

- * ANSI/ASME A112.18.1M/A112.18.1
- * NSF/ANSI 61 - Sec. 9
- * NSF/ANSI 372
- * IAPMO/cUPC
- * CA AB1953



NSF/ANSI 372
NSF/ANSI 61-9



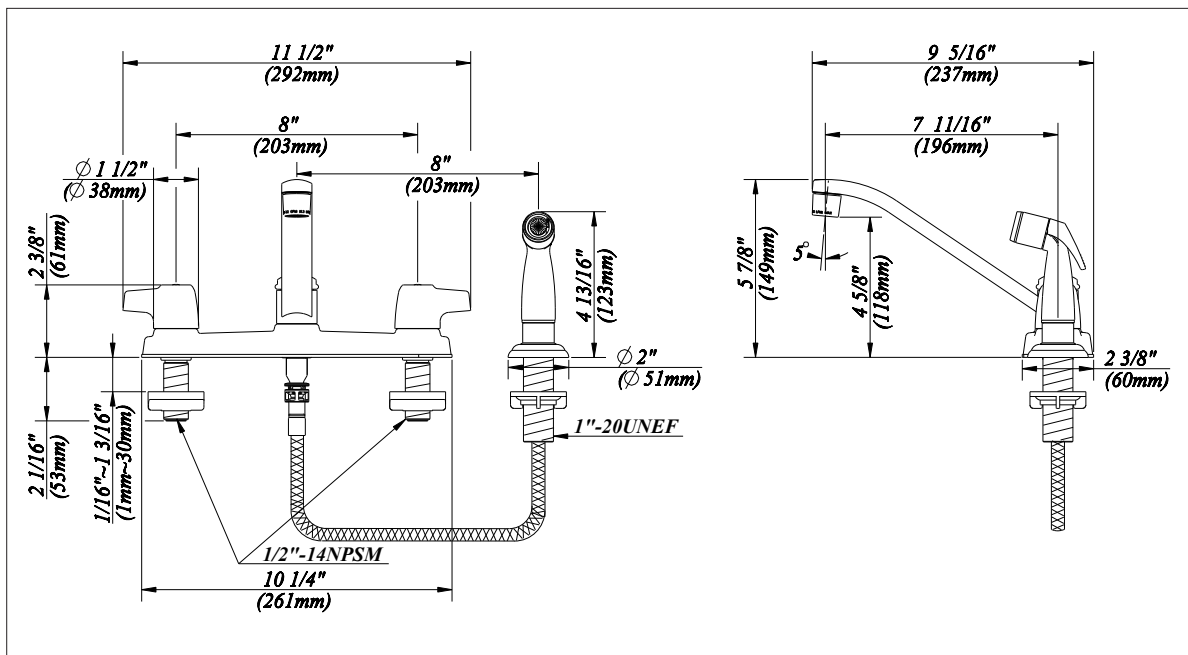
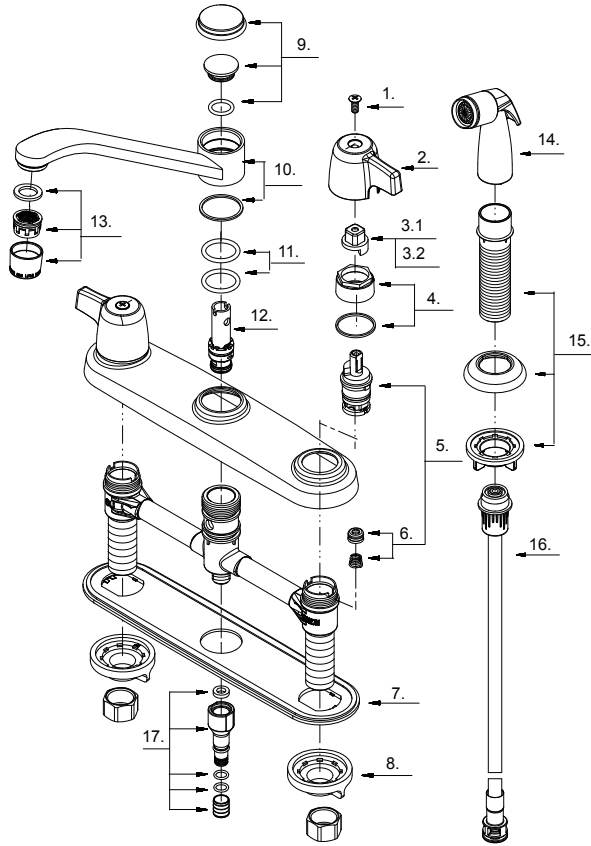
TEL: 855-806-0688

FAX: 845-350-4043

Visit Our Web Site : www.plumb4orce.com

8" Two Handle Kitchen Faucet

No.	Name	Part No.
1	Screw (3/16" -24 * 7/16" L)	A008049
2	Metal Handle	A069790
3.1	Handle Adaptor-Cold	A110039C
3.2	Handle Adaptor-Hot	A110039H
4	Retainer Nut & Washer	A663631
5	Cartridge Assembly	A66D636N
6	Seat & Spring Set	A663002
7	Putty Plate	A011125
8	Lock Nut Set	A504023
9	Spout Trim Cap	A663163N
10	Spout Set	A66D585N
11	O-Ring Set (Φ7/8" ID * Φ1-1/8" OD)	A668000N
12	Spray Diverter w/Vacuum Breaker	A66G391
13	Aerator	A500871N-51
14	Side Spray	A503000N
15	Spray Holder Assembly (3-15/16" L)	A664250-P
16	Spray Hose	A512139NKP
17	Sealing Kit	A66G352N



Product Spec Sheet