

□ **P4C-320C**

□ **P4C-320SS**



4" Two Handle Bar Faucet



FEATURES & BENEFITS

- This Product Contains Less Than 0.25% Weighted Average Lead Content On Wetted Surfaces
- Metal Wing Handles
- Washerless Cartridges
- Max Flow Rate 1.5 GPM (5.7 L/MIN) At 60 PSI (ASME A112.18.1M/A112.18.1)

P4C-320C
Chrome Finish

P4C-320SS
Stainless Steel Finish

APPROVALS:

Meets or Exceeds The Following:

- * ANSI/ASME A112.18.1M/A112.18.1
- * NSF/ANSI 61 - Sec. 9
- * NSF/ANSI 372
- * IAPMO/cUPC
- * CA AB1953



NSF/ANSI 372
NSF/ANSI 61-9



TEL: 855-806-0688

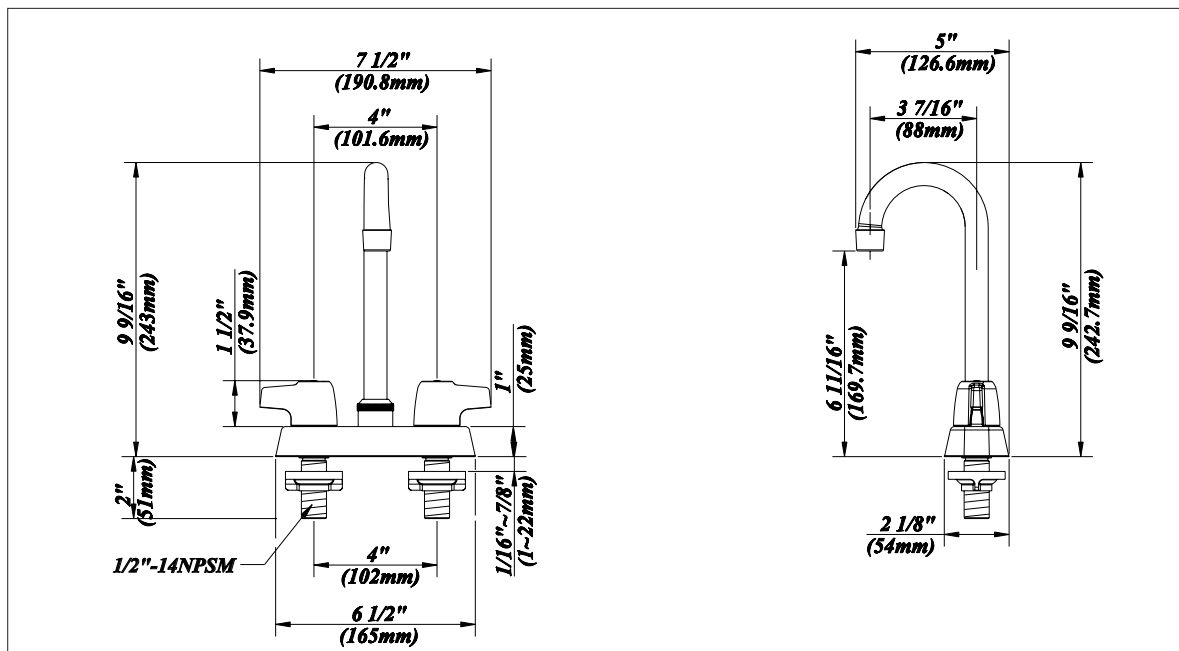
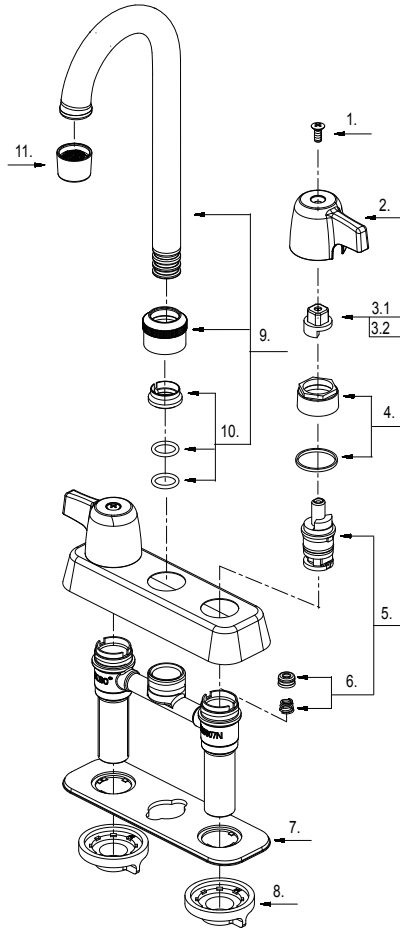
FAX: 845-350-4043

Visit Our Web Site : www.plumb4orce.com

Product Spec Sheet

4" Two Handle Bar Faucet

No.	Name	Part No.
1	Screw (Φ9*3/16"-W24*11.5L)	A008049
2	Metal Wrist Blade Handle	A069790
3.1	Handle Adaptor-Cold	A110039C
3.2	Handle Adaptor-Hot	A110039H
4	Retainer Nut & Washer	A663629
5	Cartridge Assembly	A66D636N
6	Seat & Spring Set	A663002
7	Putty Plate	A011018
8	Lock Nut Set	A504023
9	Spout Assembly	A666168N-P
10	Spout Seal Kit	A603235N
11	Aerator	A500871N-51



Product Spec Sheet